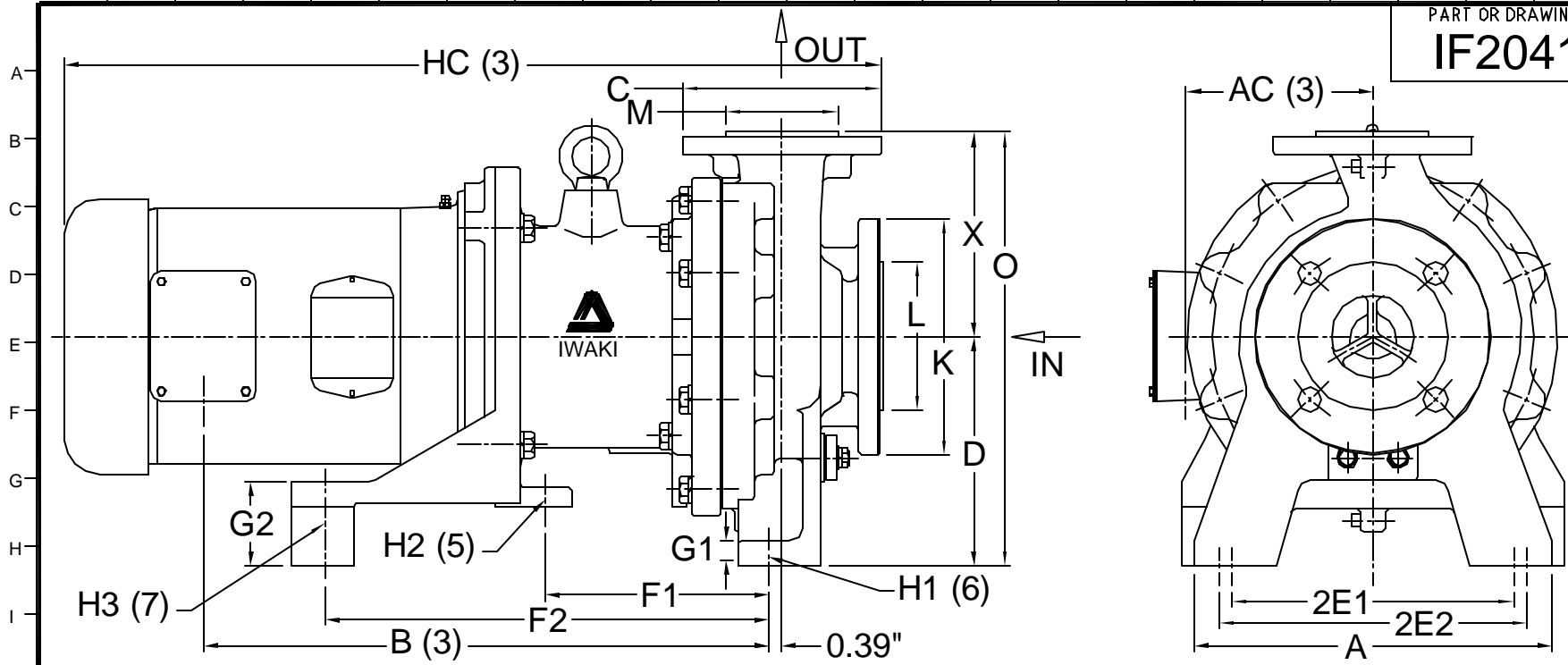


1 2 3 4 5 6 7 8 9 10 11 12 13 14 15 16 17 18 19 20 21 22 23 24 25

PART OR DRAWING NO. **IF20419** REV. **C**



PUMP DIMENSIONS (1)


A	AC (3)	B (3)	D	2E1	2E2	F1	F2	G1	G2	H1(6)	H2 (5)	H3	HC (3)	O	X	Y
11.02"	5.76"	17.41"	7.09"	8.66"	9.45"	6.89"	13.68"	0.60"	2.62"	0.55"	0.63"	0.63"	25.13"	13.39"	6.50"	4.00"

MODEL	HP/ FRAME	PUMP FLANGES (2)		DIMENSIONS			
		SUCTION	DISCHARGE	K	L	C	M
MDM-2156	5/184TC	2"	1.5"	6.50"	3.78"	5.51"	3.07"
MDM-2526		2.5"	2"	7.28"	4.61"	6.10"	3.47"

- NOTES AND REFERENCES:**
- (1) ALL DIMENSIONS IN INCHES. ALL TOLERANCES $\pm .125"$, CONSULT IWAKI AMERICA FOR MORE DETAILS. ACTUAL PRODUCT MAY DIFFER ON SOME POINTS.
 - (2) BOLT HOLE LOCATIONS OF SUCTION AND DISCHARGE FLANGES CONFORM TO ANSI B16.5 150 LB STANDARD.
 - (3) DIMENSION MAY VARY BASED ON MOTOR SIZE AND MANUFACTURER.
 - 4 NEMA MG 1-1993, PART 4 USED FOR REFERENCE.
 - (5) SLOT IS OPEN ENDED TO FRONT OF FRAME.
 - (6) SLOTS ARE OPEN ENDED TO REAR OF FRAME.
 - (7) SPACER MDM8001, 1.83" HEIGHT WITH THROUGH HOLE.
 - 8 DRAWN PER 2A401437 (MDM F05A- 2).

10619 NEW FORMAT AND NOTES EDT 08-01-04

ECO#	DESCRIPTION	DATE	REV. LTR.
WEIGHT	132 LB	WET-END MATERIALS	CFRETTE OR PFA
EDT	03 08 04	CJC	1
DRAWN	DAY MO. YR.	RELEASED	SHEET NO.

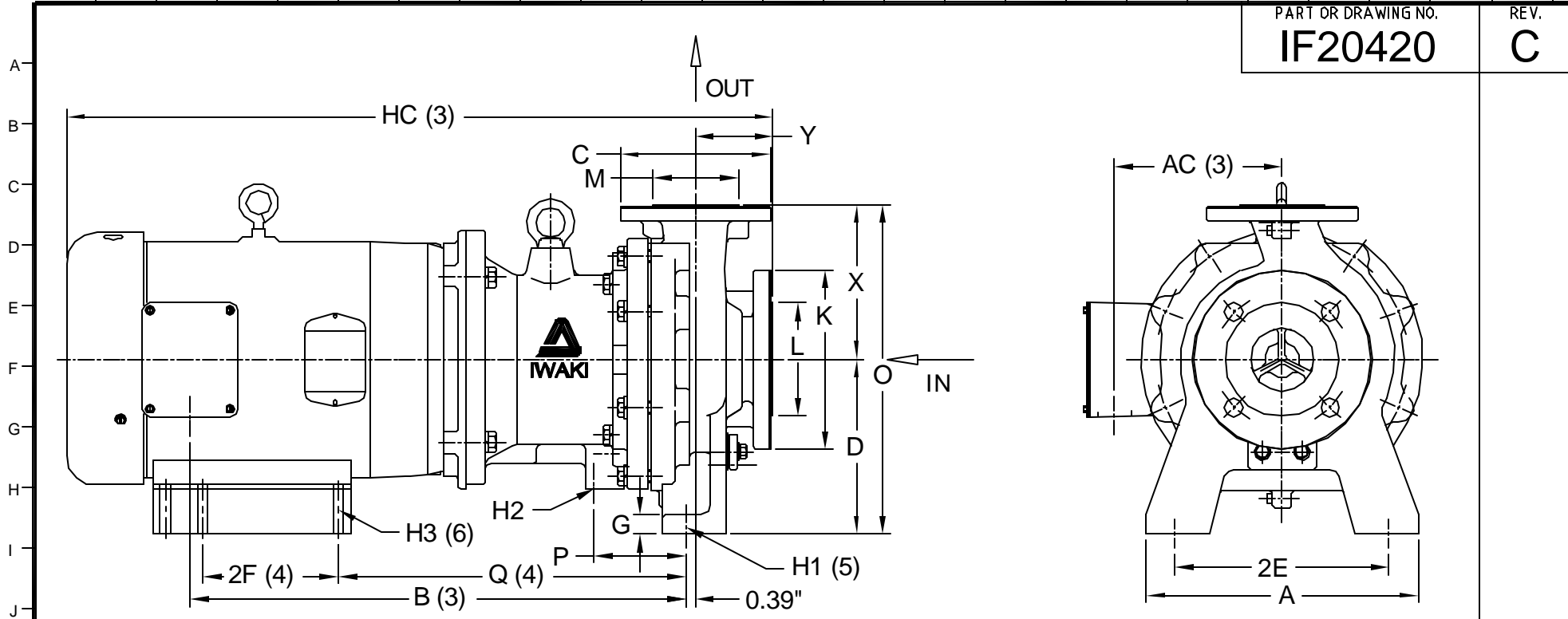


5 Boynton Rd.
Hopping Brook Park
Holliston, MA 01746
(508) 429-1440
www.IwakiAmerica.com

TITLE **MDM-2XX6 (5 HP)**
Dimensional Drawing

IF20419 PART OR DWG. NO.

REV. **C**



PUMP DIMENSIONS (1)															
A	AC (3)	B (3)	D	2E	2F (4)	G	H1 (5)	H2	H3 (4)	HC (3)	O	P	Q (4)	X	Y
11.02"	6.79"	20.07"	7.09"	8.66"	5.50"/7.00"	0.79"	0.55"	3/8"-16 UNC	0.41"	28.62"	13.39"	3.70"	14.07"	6.30"	3.15"

MODEL	HP/ FRAME	PUMP FLANGES (2)		DIMENSIONS			
		SUCTION	DISCHARGE	K	L	C	M
MDM-2156	7.5/ 213TC	2"	1.5"	6.50"	3.78"	5.51"	3.07"
MDM-2526	10/ 215TC	2.5"	2"	7.28"	4.61"	6.10"	3.46"

NOTES AND REFERENCES:

- (1) ALL DIMENSIONS IN INCHES. ALL TOLERANCES $\pm .125"$, CONSULT IWAKI AMERICA FOR MORE DETAILS. ACTUAL PRODUCT MAY DIFFER ON SOME POINTS.
- (2) BOLT HOLE LOCATIONS OF SUCTION AND DISCHARGE FLANGES CONFORM TO ANSI B16.5 150 LB STANDARD.
- (3) DIMENSION MAY VARY BASED ON MOTOR MANUFACTURER.
- (4) NEMA MG 1-1993, PART 4 USED FOR REFERENCE.
- (5) SLOTS, OPEN ENDED TO REAR OF FRAME.
- (6) SPACER MDM8002, 1.83" HEIGHT, TAPPED THRU WITH 3/8"-16 UNC THREADS.
- 7 DRAWN PER 2A401438 (MDM F A-2)

ID619 CHANGED FORMAT AND EDITED: EDT 08-03-14 C

ECO#	DESCRIPTION	DATE	REV. LTR.
	PUMP WEIGHT 132 LB	WET-END MATERIALS CFRETFE OR PFA	
EDT	03 08 04	CJC	1
DRAWN	DAY MO. YR.	RELEASED	SHEET NO.

IWAKI AMERICA 5 Boynton Rd. Hopping Brook Park Holliston, MA 01746 www.IwakiAmerica.com (508) 429-1440

IF20420 PART OR DWG. NO.

TITLE **MDM-2XX6 (7.5 & 10 HP)** REV. **C**
Dimensional Drawing